

## Special example 2: Elastilon-Lock underlay

After its presentation at a trade show in Munich, Germany, in 2005, the underlay mat 'Elastilon-Lock/Tilo-Elastofix' from the Dutch producer OSBE/Elastilon has undergone extensive testing. Independent evaluation by experts had to prove its properties concerning shear strength and its qualification for use with underfloor heating. The testing was carried out by the German ISH-institute.

'Elastilon-Lock' is an underlay with an adhesive surface on both sides. For testing purposes, the underlay was installed beneath 10 mm thick 2-layer parquet strips. As a result the product displayed very good locking properties. It also supported the dimensional stability of the parquet under climate change conditions. Gaps on the long sides of the parquet strips showed less development than on glued down parquet or conventional floating installations. The tongue and groove connection of parquet laid on 'Elastilon-Lock' is also more stable compared to click-locks and other similar joints. Even when subjected to long term use – artificially simulated in the laboratory – the shear strength of the Elastilon system still surpassed class 22-34 for wear and tear of laminate flooring, though it was already reduced by 40%.

Siegfried Heuer, an expert from the ISH institute confirmed that with regard to underfloor heating, the 10 mm parquet installation on Elastilon stayed within the heating range which is required to come through the floor construction. The formula for this value is  $R = <0,15 \text{ sqmK/W}$ .



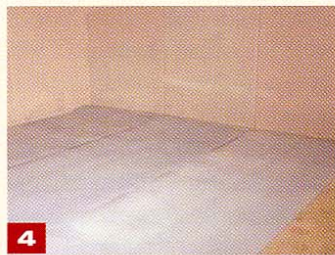
**1** Place the polyethylene film on the sub-floor in strips with an overlap of 20 to 25 cm.



**2** Roll out the Elastilon over the polyethylene film in strips that lie next to one another (the strips must not overlap)



**3** Turn over the Elastilon so that the smooth protective layer is on the upper side.



**4** Cover the entire floor surface with Elastilon.



**5** Fold back the protective foil of the adhesive layer over a width of one or two boards. The adhesive layer is now exposed.



**6** Fold the auxiliary film in two.



**7** Carefully place the auxiliary film onto the exposed adhesive layer with the fold facing the wall



**8** Position the auxiliary film.



**9** The first parquet section or board is now positioned on the auxiliary film.



**10** Place spacers between the wall and the parquet flooring.



**11** The second parquet section is pushed into the first until it locks in tightly (seamless); following this, the auxiliary film between Elastilon and the parquet board(s) is removed. From now on, work is carried out with the actual protective layer of Elastilon.



**12** From here onwards, several boards can be positioned seamlessly before the protective layer between the wood and the Elastilon is removed.